

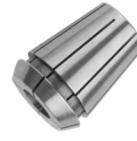
SYNCHROFLEX SFT - TAP HOLDERS FOR SYNCHRONIZED TAPPING CYCLES

Double your Tap Life and Improve Thread Quality

Modern CNC machines have the capability of synchronizing the spindle rotation to match the feed advance for a specific tap pitch. The «Rigid» or synchronized tapping cycle is very accurate, but it is impossible to avoid small discrepancies between the machine synchronization and the actual pitch of the specific tap being used. Using a rigid tap holder means that any deviation at all increases the thrust forces acting on the tap and this dramatically reduces tap life.

SynchroFlex® - The Unique Solution- Each holder is made with a precisely machined flexure which provides axial and radial compensation for the unavoidable discrepancy between the machine feed advance and the actual tap pitch. By compensating for this error, the thrust forces acting on the tap are dramatically reduced. The result is the longest possible tap life, 100% improvement or more, and much better quality threads.

TAPMATIC



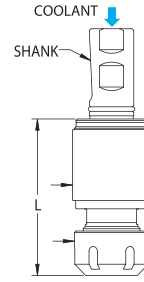
ER Tap Collets also available



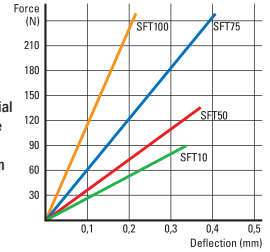
SYNCHROFLEX SFT Modular Straight Shank

Model No.	Capacity in 1010 Mild Steel	Mount	Collet Series	D	d	L	Axial Comp.	Price
SFT10II-1.00ER11	#2 - #10-32 M2 - M5	1.00" Straight Shank	ER11	.925	.740	2.09	± .020	\$834 ^{.95}
SFT50II-1.00ER20	#8 to 1/2" - 20 M4 - M12		ER20	1.362	1.340	2.49		\$763 ^{.95}
SFT75II-1.00ER25	3/8" to 3/4-10 M10 - M20		ER25	1.733	1.650	3.26		\$894 ^{.95}
SFT100II-1.00ER40	5/8" to 1" M18 - M30		ER40	2.440	2.480	4.39		\$1,786 ^{.95}

Pricing shown for straight shank tools only. Pricing for taper shank tools available on request. SFT Modular straight shank with quick-change spindle also available.



SynchroFlex® Force vs Deflection Rates
Unlike competitors that employ elastomer rings to provide a small amount of axial compensation (±0.5mm), the SynchroFlex® flexure has a consistent force vs. deflection rate. This means consistently superior tap life and thread quality.



NEW for 2023

RX-II SERIES - TAPPING ATTACHMENTS for MANUAL TAPPING APPLICATIONS

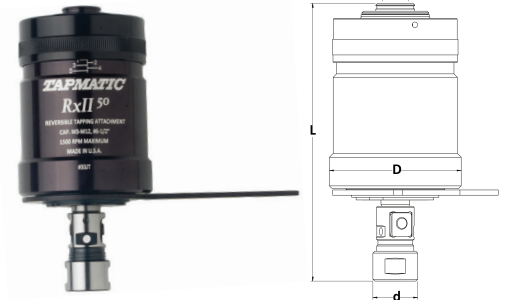
High production self-reversing tapping attachments with high-speed reverse and pre-selective torque control

- For hard to machine material and high torque applications like roll form tapping
- Less tap breakage due to pre-selective torque control
- Reduced cycle time through increased 1.75 : 1 reverse speed
- Easy handling, compact design
- Easily adaptation with multiple interchangeable arbors

TAPMATIC

RXII Series Reversing Tappers

Model No.	Capacity in 1010 Mild Steel	Mount S	Collet Series	*Rec. Max. Speed	Weight	D	d	L	*Self Feed	Price
RX30II-33JT	#0 - 1/4" M1.4 - M7	#33 JT	#21000	2000 RPM	1.5lb .70kg	2.09" 53mm	.748" 19mm	4.57" 116mm	.13" 3mm	\$998 ^{.40}
RX50II-33JT	#6 - 1/2" M3 - M12	#33 JT	#22000	1500 RPM	4.0lb 1.8kg	3.15" 80mm	1.063" 27mm	6.65" 169mm	.20" 5mm	\$1,496 ^{.68}
RX70II-3JT	#10 - 3/4" M5 - M18	#3 JT	#24000	750 RPM	6.7lb 3.0kg	3.46" 88mm	1.456" 37mm	7.17" 182mm	.27" 7mm	\$1,779 ^{.95}



Torque Bars available

Always mount a torque bar to hold the tapping attachment's stop arm from rotating. The Torque Bar must be mounted securely to the table or quill of your machine. The torque bar installation must be stronger than the largest tap in the tool's capacity.

Rubber Flex Multi-range Collets

Collet Series	Cat. No.	Tap Size	Shank Size	Price
#21000 For RX30II	21600	#0 - #8 Standard	.098 - .177	\$119 ^{.95}
	21700	#10 - 1/4" Standard	.177 - .256	
#22000 For RX50II	22100	#0 - 1/4 Standard	.139 - .257	\$124 ^{.95}
	22200	1/4" - 1/2" Standard	.253 - .383	
#24000 For RX70II	24100	#10 - 1/2" Standard	.176 - .383	\$134 ^{.95}
	24000	5/16" - 5/8" Standard	.280 - .500	
	24500	3/4" Standard	.393 - .590	



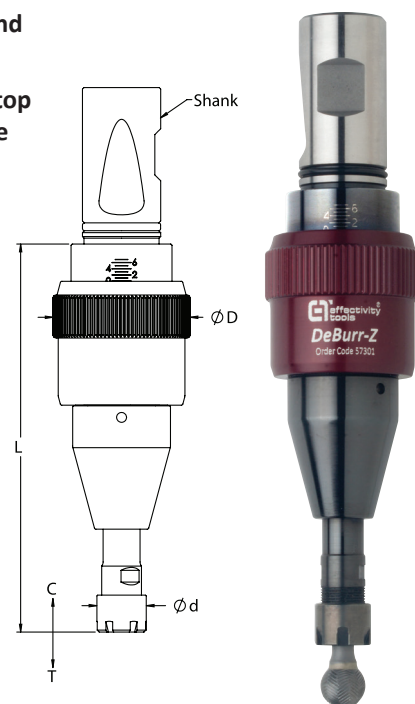
Tél. : 819.820.7477
1.877.565.1788
Télec. : 819.820.8183
info@bercor.ca
www.bercor.ca

Pricing on this flyer is valid until November 30th, 2023

DEBURR-Z CNC DEBURRING TOOL W/COMPRESSION & EXTENSION FLOAT

- Deburr parts quickly and consistently on the CNC machine eliminating the need for tedious hand work
- The Deburr-Z floats in both compression and extension allowing the cutting tool to follow the top edges or underside edges of the work piece, even when these are not clearly defined like in the case of castings and cross holes
- Adjust the force to increase or decrease the pressure depending on the type of material and desired edge break
- For deburring, and chamfering on CNC machines
- Improves the life of cutting tools thanks to the adjustable compression force
- Speeds up the process by allowing faster approach feed rates
- The compression and extension force can be simultaneously and equally adjusted for increasing or decreasing the pressure of the cutting tool against the work piece
- ER11 collet holds a wide variety of burr cutting tools
- Easy programming and installation on the CNC machine

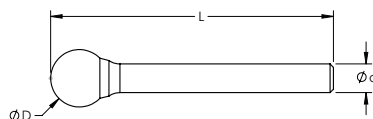
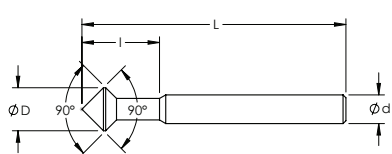
Burr # 52MM20593W and 52MM20591W must be ordered separately.



Includes Burr #5250BW and ER11P-0250 collet at no additional charge

Model	Designation	Shank	Collets (Capacity)	Max. RPM	Compression C	Extension T	d	D	L	Weight (KG)	Price
DeBurr-Z	57301K	1"	ER11 (2.5 - 6.5)	10,000	.39	.39	.63	1.73	5.04	0.7	\$1,449^{.95}

The DeBurr-Z can be used with spherical and angular shaped burrs, made from HSS or Carbide, in a variety of sizes and tooth patterns. These are available from different manufacturers. Tapmatic offers special carbide burrs, like the examples shown here, for topside and underside edge deburring. They also include a sharp point that can be used for engraving. They can be used for a variety of materials including steel, aluminum and cast iron.



Spherical burrs are also available

Designation	d	D	l	L	Price
52MM20590W	1/4	3/8	.67	2.30	\$219^{.95}
52MM20591W	1/4	1/2	.79	2.42	\$255^{.95}

Designation	d	D	L	Price
5250BW	1/4	1/2	2.42	\$93^{.50}

Note! More sizes are available on request

Top Edges



Underside Edges



Intersecting



Deburr-Z Video

